



Straumann® Bone Level
Tapered Implant Ø2.9 mm

The Straumann® Bone Level Tapered Implant Ø2.9 mm



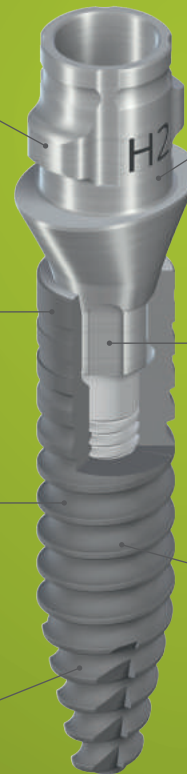
One system,
one final abutment torque

The Bone Level Tapered Ø2.9 mm
is indicated for the following:

- maxillary lateral incisors
- mandibular incisors

Roxolid® is a material with
excellent mechanical properties

Apically tapered implant body
is designed to allow
underpreparation to support
primary stability in soft bone



Variobase® for crown
for single-unit restorations
of Straumann SC Implants

Small CrossFit® connection
provides simplified accuracy
and provides confidence for
component positioning

SLActive® surface allows
faster osseointegration* and
increased predictability



*Compared to SLA

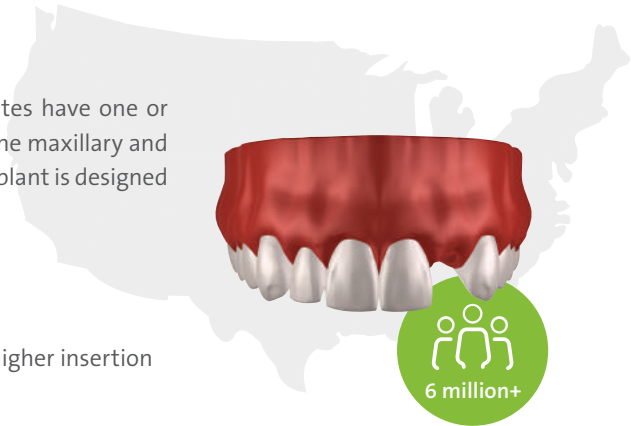
More than a small diameter.

Slim yet strong.

Over **6 million people**, approximately 2% of the population, in the United States have one or both of the maxillary lateral incisors missing.¹ The reduced interdental space of the maxillary and mandibular incisors can be challenging to treat. The Straumann® BLT Ø2.9 mm implant is designed to treat these patients while providing peace of mind.

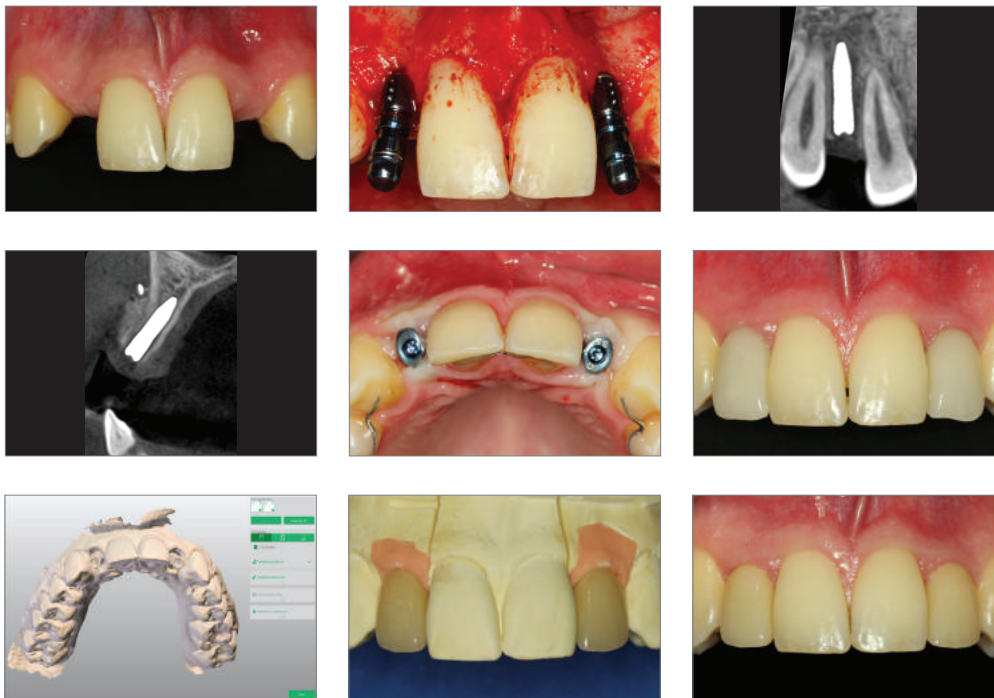
HIGH IMPLANT-ABUTMENT STRENGTH

The Bone Level Tapered Ø2.9 mm implant shows high mechanical strength and higher insertion torque for final abutments.



	STMN BLT Ø2.9 mm	Nobel Active Ø3.0 mm Nobel Biocare	Osseospeed Ø3.0 mm Astra Tech
Torque [Ncm]	35	15*	15**

STRAUMANN® BONE LEVEL TAPERED Ø2.9 MM IMPLANT CLINICAL CASE



Case courtesy: Dr. med. dent. Kay Vietor

Data on file @Straumann
Test set up according to Norm ISO 14 801

¹Symons AL, Stritzel F, Stauation J. Anomalties associated with hypodontia of the permanent lateral incisor ans second premolar. J Clin Pediatr Dent. 1993 Winter; 17(2): 109-11.

*Prosthetic Torque Guide. <https://www.nobelbiocare.com/content/dam/Migration%20Assets/Documents/Discover/customer-service/Prosthetic%20Torque%20Guide.pdf>. Accessed December 20, 2016.

**Astra Tech Implant System Product Catalog Astra Tech Implant System for OsseoSpeed TX. <http://www.dentsplyimplants.com/~/media/M3%20Media/DENTSPLY%20IMPLANTS/Product/1207012%20Product%20catalog.ashx?filetype=.pdf>. Accessed December 20, 2016.